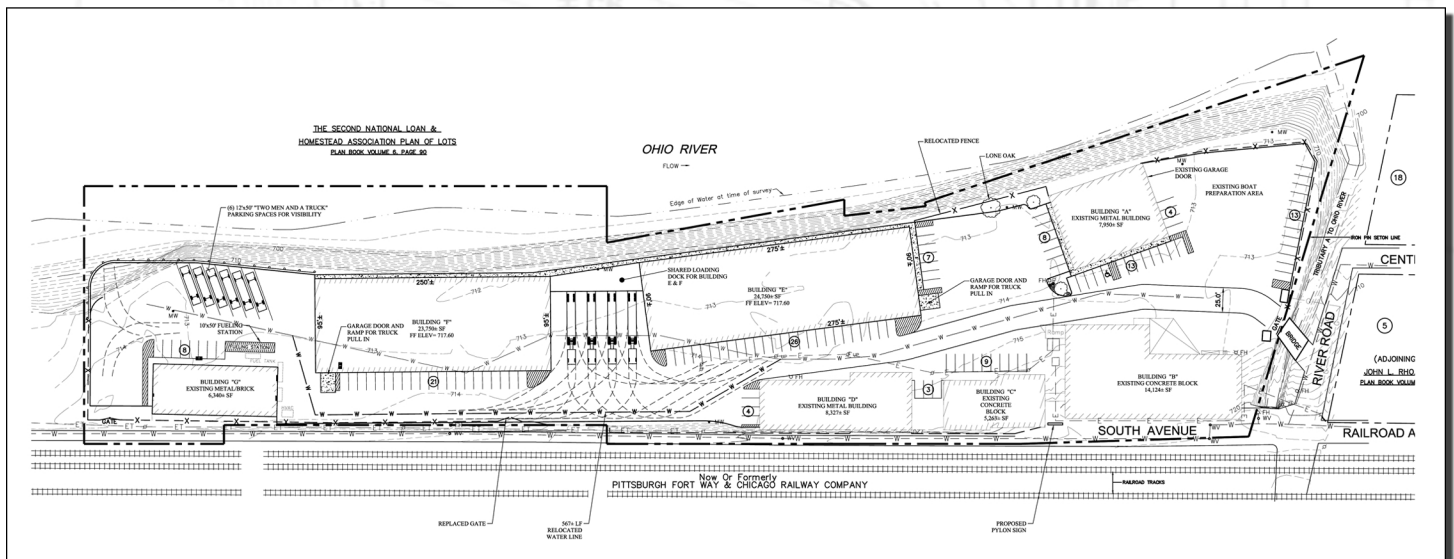


PITTSBURGH, PENNSYLVANIA



FOR PITTSBURGH STAGE, A FULL SERVICE SOUND- AND STAGE-SET DESIGNER AND CONTRACTOR, RED SWING GROUP WAS ENGAGED TO PREPARE CONCEPTUAL MASTER PLANS FOR FUTURE PLANNING OF ADDITIONAL BUILDINGS AT PITTSBURGH STAGE'S 6.7-ACRE HOME SITE ALONG THE OHIO RIVER IN SEWICKLEY. SPECIFIC SCOPE ITEMS INCLUDED:

- EVALUATION OF THE CURRENT SITE AND HOW BEST TO ACCOMMODATE FUTURE GROWTH/NEEDS.
- CONCEPTUAL PLANS SHOWING PLACEMENT OF TWO PROPOSED 25,000-SQUARE-FOOT BUILDINGS, AS WELL AS TRUCK CIRCULATION AND INGRESS/EGRESS ROUTES.
- INCORPORATION OF PARKING/TURNAROUND AREAS FOR ANOTHER BUSINESS ON THE SITE TO ELIMINATE CONSTRUCTION DISRUPTIONS AND MAXIMIZE LAND SPACE EFFICIENCY BY SHARING CIRCULATION ROUTES.



SITE CHALLENGES:

- **NARROW SITE ALONG THE OHIO RIVER:** RED SWING WORKED CLOSELY WITH PITTSBURGH STAGE OWNERSHIP AND IT'S CONTRACTOR TO MOST EFFICIENTLY INCORPORATE NEW STRUCTURES INTO OVERALL SITE LAYOUT.
- **TRUCK TURNAROUNDS:** TO ENABLE FULL-SIZE TRACTOR TRAILERS TO EASILY MANEUVER THROUGH THE SITE TO/FROM LOADING DOCKS, RED SWING DESIGNED A SHARED LOADING DOCK SYSTEM THAT MAXIMIZES INFRASTRUCTURE CAPITAL COST SAVINGS AND SPACE CONSIDERATIONS.

CLIENT:

PITTSBURGH STAGE

PROJECT DATES:

MAY - JULY 2010

KEY PERSONNEL:

MATTHEW SMITH, ROBERT MCCOLLIM

4154 OLD WILLIAM PENN HIGHWAY, SUITE 300 • MURRYSVILLE, PA 15668

P: 724.325.1215 F: 866.295.5226

WWW.REDSWINGGROUP.COM

CIVIL ENGINEERING • DUE DILIGENCE • SUSTAINABLE & WATER • TELECOMMUNICATIONS • OWNERS