

# IXE OFFICE BUILDING

## EAST STROUDSBURG, PENNSYLVANIA



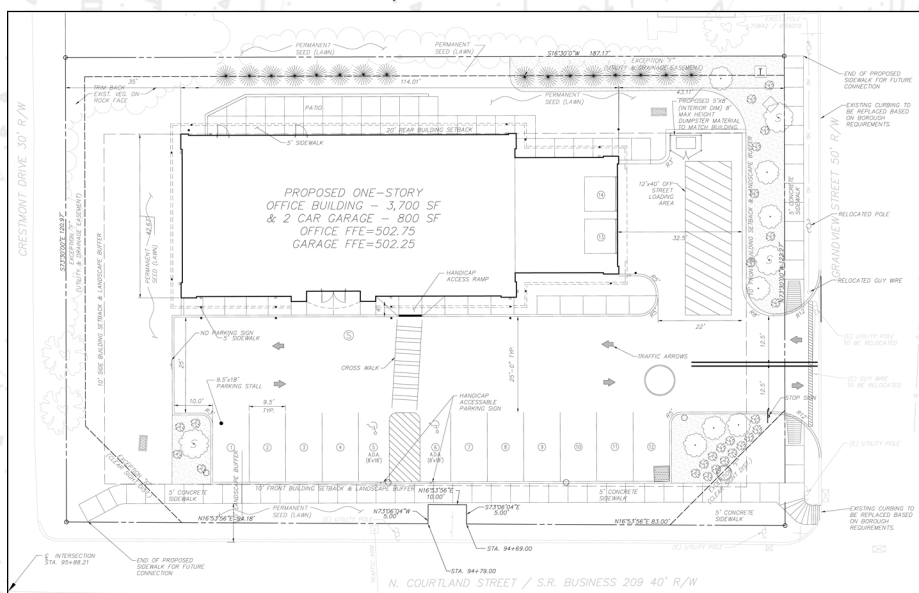
IXE CORPORATION ENGAGED RED SWING TO PREPARE FULL SITE ENGINEERING PLANS IN PREPARATION FOR THE CONSTRUCTION OF A 4,000 SQUARE FOOT OFFICE BUILDING ON A CHALLENGING, FLAT HALF-ACRE PARCEL IN EAST STROUDSBURG. RED SWING'S SPECIFIC SCOPE ITEMS INCLUDED:

- SITE LAYOUT/GRADING
- STORMWATER SYSTEM
- UTILITIES LAYOUT
- COORDINATION WITH THE LOCAL PLANNING COMMISSION AND BOARD SUPERVISORS
- SECURING OF A HIGHWAY OCCUPANCY PERMIT FROM PENNDOT



### SITE CHALLENGES:

- **BEDROCK:** BECAUSE OF SHALLOW SOIL DEPTHS (APPROXIMATELY ONE FOOT) THAT WERE FOLLOWED BY BEDROCK, RED SWING'S DESIGN PLANS CALLED FOR SHALLOW UTILITY NETWORKS AND ROCK REMOVAL TO CREATE A SUITABLE PAD AREA FOR THE NEW OFFICE BUILDING.



- **STORMWATER:** BOTH THE SITE'S SHALLOW DEPTH TO ROCK AND FLATNESS REQUIRED A SHALLOW STORMWATER SOLUTION. RED SWING USED A FOUR-INCH DEEP UNDERGROUND RAIN STORE 3 SYSTEM TO PROVIDE THE REQUIRED STORMWATER STORAGE. THE DESIGN REQUIRED A LARGE FOOTPRINT UNDER THE PARKING LOT TO ACHIEVE THE REQUIRED VOLUME WHILE MINIMIZING THE DEPTH OF ROCK EXCAVATION.

### PROJECT STAFF:

**MATTHEW SMITH, CHRIS NIX,  
ROBERT MCCOLLIM, JEFF DELUCA**

### CLIENT:

**IXE CORPORATION**

### PROJECT DATES:

**NOVEMBER 2008 - JUNE 2009  
(FINAL PLAN SETS APRIL 2010)**

### ARCHITECT:

**PHASE 3 DESIGN ASSOCIATES**

**4154 OLD WILLIAM PENN HIGHWAY, SUITE 300 • MURRYSVILLE, PA 15668**

**P: 724.325.1215 F: 866.295.5226**

**WWW.REDSWINGGROUP.COM**

**CIVIL ENGINEERING • DUE DILIGENCE • SUSTAINABLE & WATER • TELECOMMUNICATIONS • OWNERS**