

ATLAS CEMENT PLANT

PENN HILLS, PENNSYLVANIA



FOR AN UNKNOWN TIMEFRAME, THE FORMER ATLAS CEMENT PLANT SITE IN PENN HILLS TOWNSHIP HAD BEEN USED AS A CONSTRUCTION WASTE DUMP AND CRUSHING OPERATIONS AREA. HOWEVER, BECAUSE NEITHER THE MUNICIPALITY NOR THE PROPERTY OWNER HAD ISSUED APPROVALS FOR THIS ACTIVITY, THE CONTRACTOR USING THE SITE WAS SUBJECT TO LEGAL ACTION.

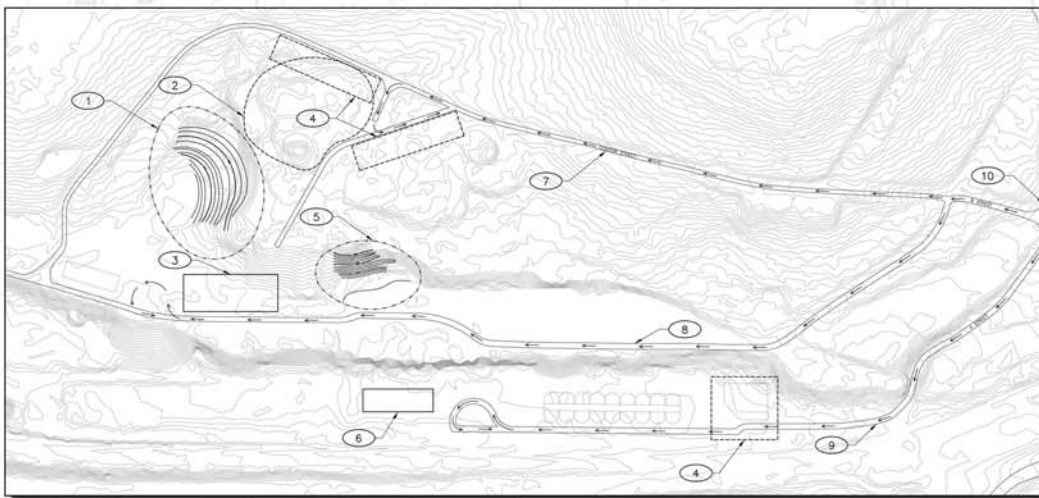


TO ADDRESS THIS, THE MUNICIPALITY RECOMMENDED THAT THE CONTRACTOR RETAIN RED SWING GROUP TO LEAD THE COMPANY THROUGH THE NECESSARY STEPS TO ACHIEVE MUNICIPAL/ PERMITTING APPROVALS. SPECIFIC SCOPE ITEMS INCLUDED:

- COORDINATING SURVEYING EFFORTS TO ESTABLISH SITE CONTROL
- ESTIMATING PREVIOUSLY PLACED AND PROPOSED FILL MATERIAL QUANTITIES
- PREPARING A CORRECTIVE ACTION PLAN (CAP)

PROJECT CHALLENGES:

- **SITE RECONNAISSANCE:** RED SWING BOTH VISITED THE SITE AND GATHERED HISTORICAL DOCUMENTS TO ESTABLISH EXISTING AND PAST CONDITIONS. THE COMPANY ALSO HIRED A SURVEYOR, WITH THE GOAL OF ESTABLISHING SEVEN CONTROL POINTS. THIS FACILITATED ADJUSTMENTS TO LiDAR TOPOGRAPHY SO THAT AUTOCAD DRAWINGS OF THE PRESENT-DAY SITE COULD BE CREATED - ONES THAT ESTIMATE PLACEMENT OF FUTURE MATERIAL VOLUME.



- **FILL MATERIAL ESTIMATE:** USING HISTORICAL AND PRESENT-DAY RECORDS, RED SWING ESTIMATED BOTH PERMITTED AND UNPERMITTED FILL QUANTITIES SO THAT A GRADING PERMIT FEE COULD BE ASSESSED.

PENN HILLS ULTIMATELY APPROVED THE CAP AND ISSUED GRADING PERMITS FOR CONTINUED USE OF THE SITE.

PROJECT STAFF:
**ROBERT SMITH &
ZACH MILANAK**

CLIENT:
**R&B CONTRACTING
WILLIAM ROGERS, PRESIDENT**

PROJECT DATES:
JUNE - AUGUST 2013

4154 OLD WILLIAM PENN HIGHWAY, SUITE 300 • MURRYSVILLE, PA 15668

P: 724.325.1215 F: 866.295.5226

WWW.REDSWINGGROUP.COM

CIVIL ENGINEERING • DUE DILIGENCE • SUSTAINABLE & WATER • TELECOMMUNICATIONS • OWNERS