

SURVEYING SERVICES

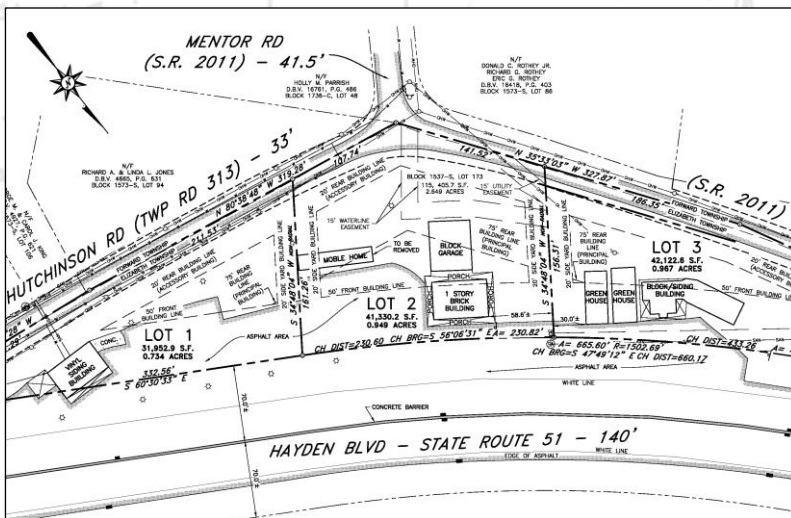


AS A PROFESSIONAL LAND SURVEYING COMPANY, RED SWING GROUP PROVIDES A VAST AMOUNT OF LAND PROPERTY SERVICES TO OUR CLIENTS. ALL PROJECTS COMPLY WITH APPLICABLE LAWS, REGULATIONS, STANDARDS AND CODES WHICH HAVE BEEN ESTABLISHED BY THE PENNSYLVANIA BOARD OF LICENSURE FOR PROFESSIONAL ENGINEERS AND LAND SURVEYORS.



SERVICES OFFERED:

- ALTA SURVEYS
- BOUNDARY SURVEYS
- MORTGAGE SURVEYS
- RESIDENTIAL SURVEYS
- TOPOGRAPHIC SURVEYS
- AS-BUILT SURVEYING
- RESIDENTIAL SITE PLANS
- COMMERCIAL SITE PLANS
- SUBDIVISION & CONSOLIDATION PLANS
- CONSTRUCTION STAKING
- GPS CONTROL SURVEYS
- PROPERTY LINE MARKING
- LANDSLIDE LOCATIONS
- EASEMENT SURVEYS
- LEGAL DESCRIPTIONS
- FLOOD CERTIFICATES



KEY PERSONNEL:

JAMES DEGLAU, SCOTT PILSTON, LORI DEGLAU, CARY LINDICH, DREW MAUGHAN

**ONE MONROEVILLE CENTER · 3824 NORTHERN PIKE, SUITE 800
MONROEVILLE, PA 15146**

P: 724.325.1215 WWW.REDSWINGGROUP.COM

CIVIL ENGINEERING · DUE DILIGENCE · SURVEY · TELECOMMUNICATIONS · OWNERS